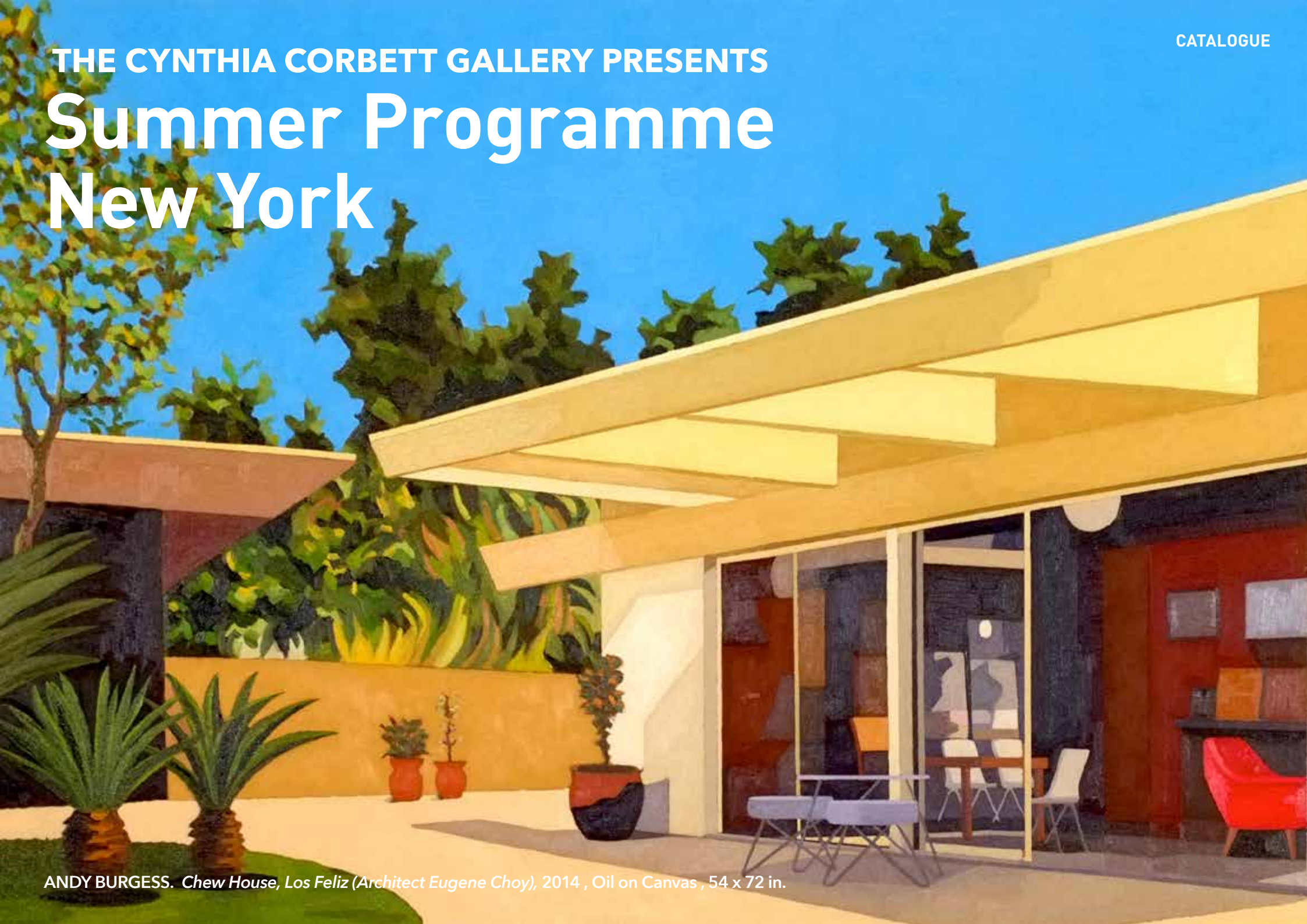


THE CYNTHIA CORBETT GALLERY PRESENTS

Summer Programme New York



ANDY BURGESS. *Chew House, Los Feliz* (Architect Eugene Choy), 2014 , Oil on Canvas , 54 x 72 in.

THE CYNTHIA CORBETT GALLERY PRESENTS Summer Programme New York



UPCOMING SHOW PREVIEW / NEW YORK, NY
May 2014

Site 109 | The Cynthia Corbett Gallery
100 Norfolk Street | New York, NY 10002
0718-680-7778 | www.thecynthiacorbettgallery.com

ANDY BURGESS
Poolside abstraction



Andy Burgess' new work depicts a poolside scene, a presentation that yields gorgeous results in his Mondrian-like fantasies of modernist construction, essentially blue skies and sandy swimming pools, their rippled surfaces more like glass than water.

"The last couple of years I've been painting modern houses in and around Los Angeles and Palm Springs. I've been very interested in looking at abstraction through architecture. I want to bring the abstraction right off it," Burgess says of his new work. "I like the way the materials, including the glass and steel, interact with the light and color."

Light and color is what brought the Los Angeles painter to Tucson, Arizona, where he currently lives and paints. He discovered the modernist Arizona architects for his Western viles and its thriving art and culture when he father a traveling actor with the Brent Shakespeare Company, but visited during his sabbatical.

"He was doing Ring Lard at the University of Arizona and I fell in love with the town," Burgess says. "It's sunny, warm, bright and fairly quiet. It doesn't provide me with many subjects, though, which is why I moved so frequently."

After painting so many modernist houses, Burgess is a believer in the ideas they inhabit, including the open design with floor-to-ceiling windows. "I think they're fabulous. That's the way I want to live, to break down the barrier that is inside and outside" he says of his subjects. "There's this openness with more light, and

clean lines, bold designs and vibrant colors, often featuring blues." "I try a lot of my blues, including turquoise blues, aqua, glacial blues, glacial green, cerulean blues and so on."

Even now, though, he still feels like new changes are coming. "The Modern House, green version is a new departure for me at the moment. It's full of muted greens and greys, these turquoise greens that are almost black," he says. "It's slightly more of a film noir mood for me because my colors look out of the past, something like a faded photograph or an old movie. It can be thought of as a nod to the architectural work of David Hockney and more Edward Hopper."

Burgess will join photographer Tom Leighton in a two-man show titled ARCHITECTURE, hosted by London-based The Cynthia Corbett Gallery at Site 109 in New York City. The show opens May 1 and hangs through June 1.

098 www.AmericanArtCollector.com




1. Contemporary house on Catalina, 64 x 48"
2. The California, 68 x 48 x 12"
3. Modernist House, Palm Springs, 68 x 48 x 12"
4. The Modern House, green version, 68 x 48 x 12"

light is most important to our mood. These houses also provide access to nature and access to the sky."

Burgess had been known for his playful stereotypes made of barely stacked squares and rectangles, a style he termed "pop geometry." After discerning minimalist and modernist architecture including the William Leach House in New York and the Smith House in Los Angeles, he turned his attention to his current work, with its

680

EXHIBITING ARTISTS:

Deborah Azzopardi

Andy Burgess

Lluis Barba

Lottie Davies

Nina Fowler

Tom Leighton

Nina Jun

Patrick Pietropoli

Klari Reis

Nicolas Saint Gregoire

Derrick Santini

Heidi Spector



DEBORAH AZZOPARDI
He Loves Me, 2010
Acrylic on Board
33.1 x 23.6 in.

DEBORAH AZZOPARDI

Relaxing, 2007

Acrylic on Board

26 x 48 in.



DEBORAH AZZOPARDI
The Unexpected Call, 2012
Acrylic on board
48 x 36.5 in.



DEBORAH AZZOPARDI
Vintage, 2010
Acrylic on board
37 x 50.6 in.



DEBORAH AZZOPARDI

Lost Earring, 2010

Acrylic on board

48 x 48 in.



DEBORAH AZZOPARDI

FREEDOM!, 2005

Acrylic on board

39 x 39 in.

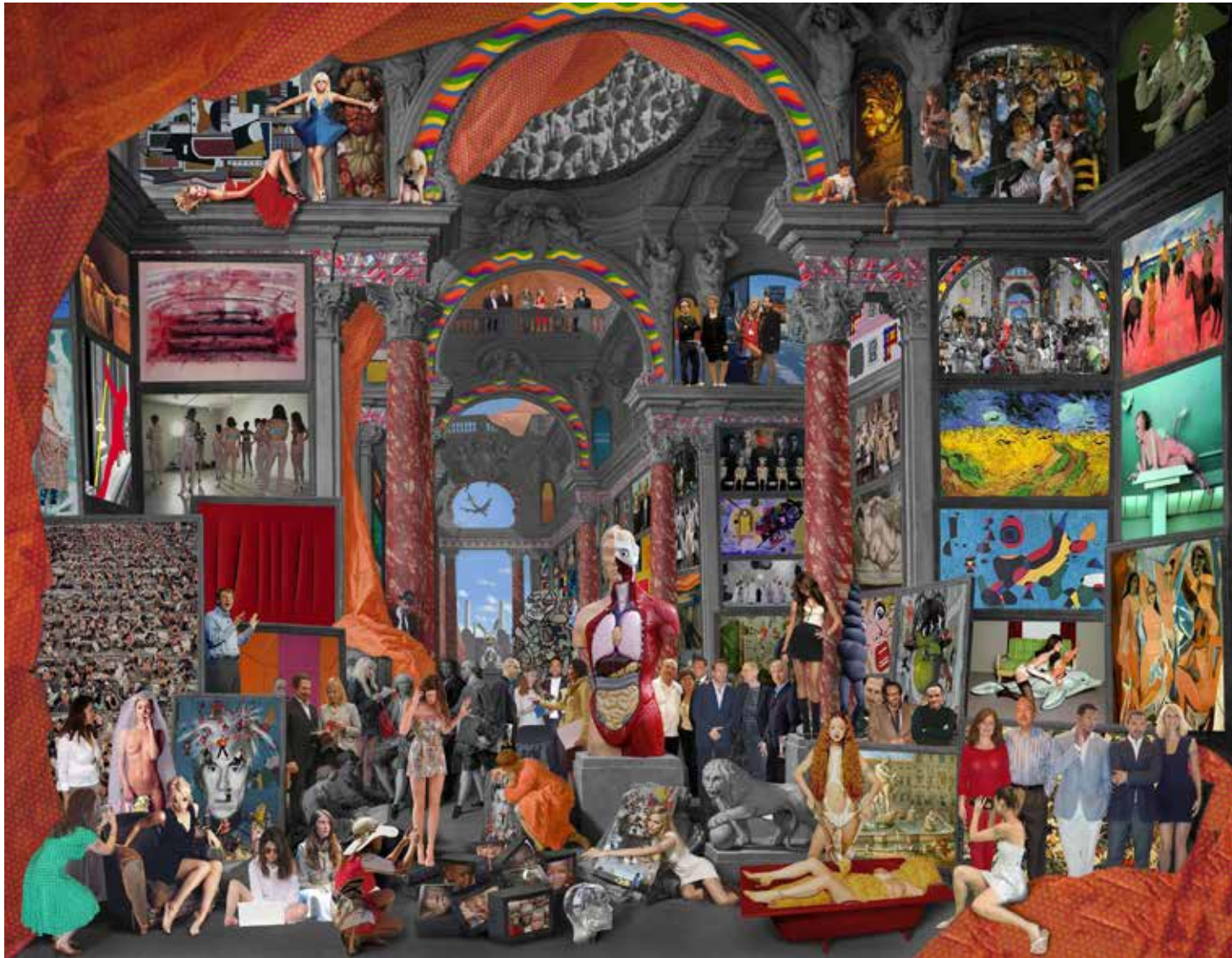


LLUÍS BARBA

Gallery of Views of Modern Rome. Giovanni Paolo Pannini, 2012, Edition of 6

Digital C-type print, Perspex/Aluminium mounted

71.7 x 92.7 in.



ANDY BURGESS
Stahl House V, 2013
Acrylic on Canvas
60 x 80 in.



ANDY BURGESS

Chew House, Los Feliz (Architect Eugene Choy), 2014

Oil on Canvas

54 x 72 in.



LOTTIE DAVIES

Viola as Twins, 2008, Edition of 5

Lambda print on aluminium in tray frame

52 x 66.2 in.



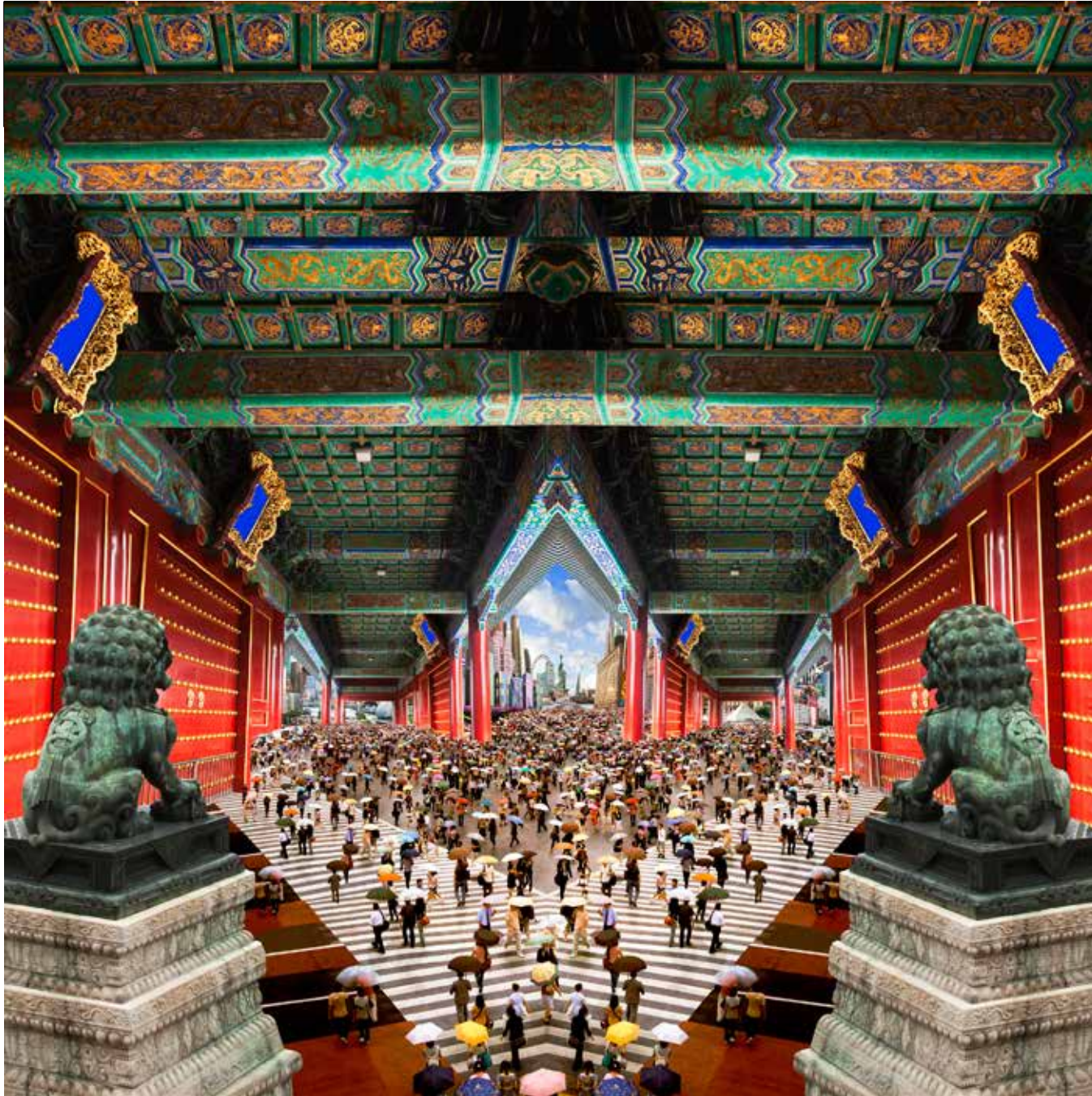
NINA FOWLER

Marlene (Knockers IV), 2013

Black chalk on paper (mounted on board) and brass

44 x 57 in.





TOM LEIGHTON
Forbidden City, 2014, Edition of 5
C- Type Digital Print, Perspex mounted
60 x 60 in.

TOM LEIGHTON

Hollywood Land, 2012, Edition of 5

C- Type Digital Print, Perspex mounted

60 x 116 in.





KLARI REIS
Blebs, 2013
Mixed Media on Floating Aluminum Panel
40 x 40 in.

KLARI REIS

Purple Bulbous Systemic, 2012

Mixed Media on Floating Aluminum Panel

45 x 96in.



KLARI REIS

Hypochondria Noir 150, 2013

Mixed media, Petri Dishes,

Tee Nuts and Steel Rods

Circular Template

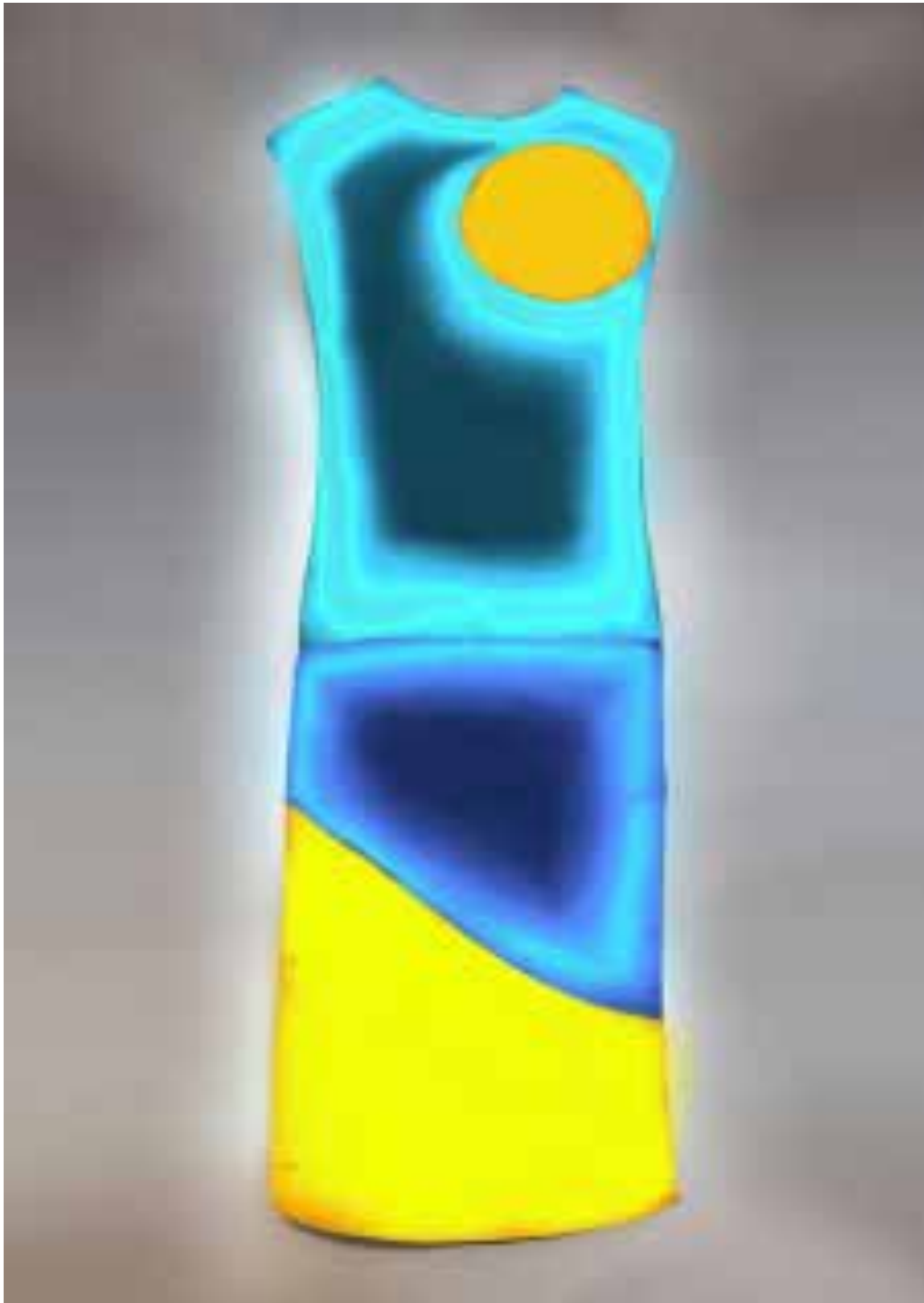
60 in. diameter



KLARI REIS

Hypochondria 150, 2013
Mixed media, Petri Dishes,
Tee Nuts and Steel Rods
Circular Template
60 in. diameter





NICOLAS SAINT GREGOIRE
Pop Art Dress Sun (Warhol), 2012
Edition of 7
Plexiglass & Cold Cathodes
63 x 23.6 in.



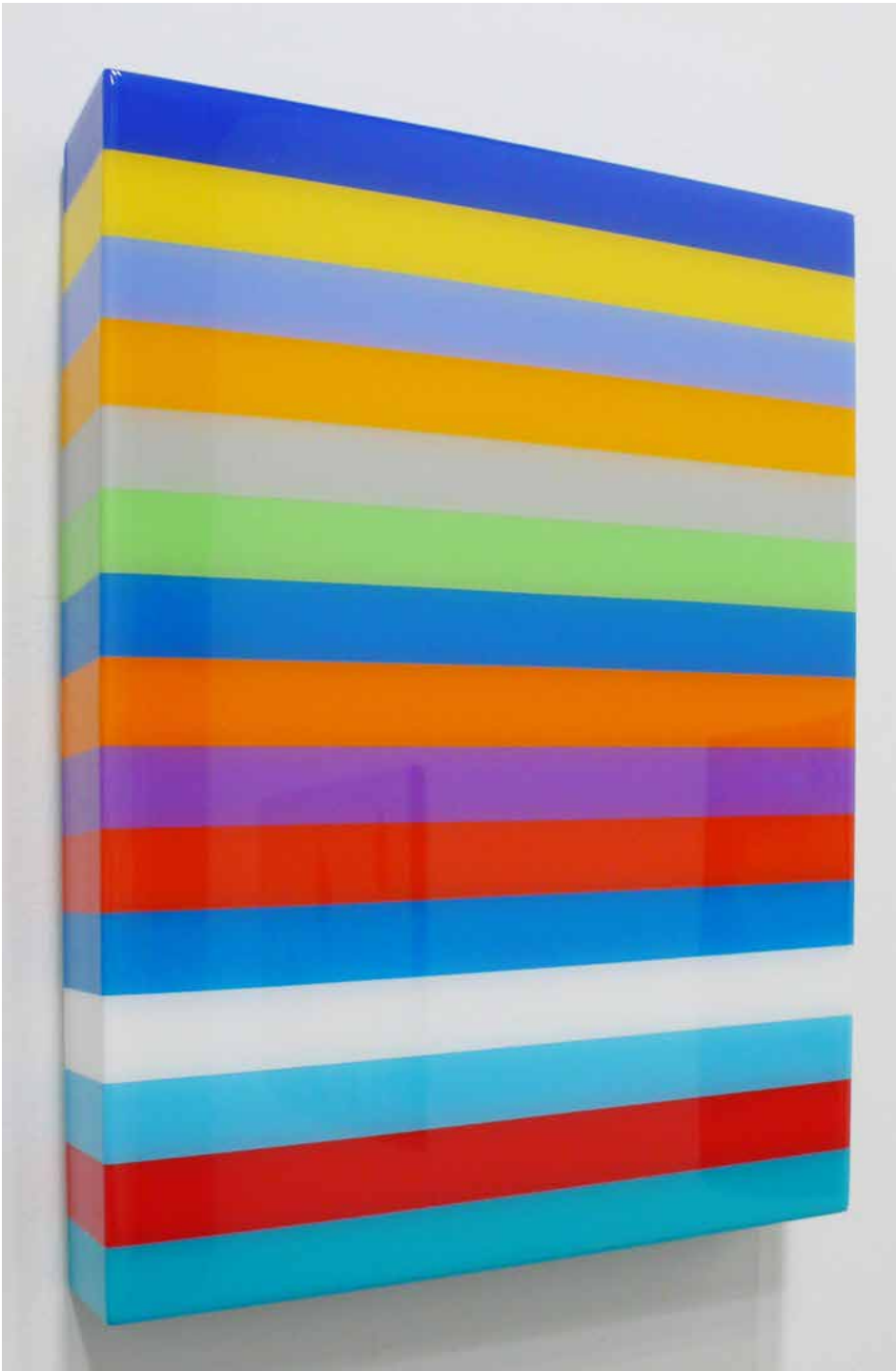
DERRICK SANTINI
Underwater Love, 2012
Edition of 3
Lenticular light box
46.8 x 33.1 in.



DERRICK SANTINI
Teardrop, 2012
Edition of 3
Lenticular light box
46.8 x 33.1 in.



DERRICK SANTINI
Mermaid, 2012
Edition of 3
Lenticular light box
46.8 x 33.1 in.

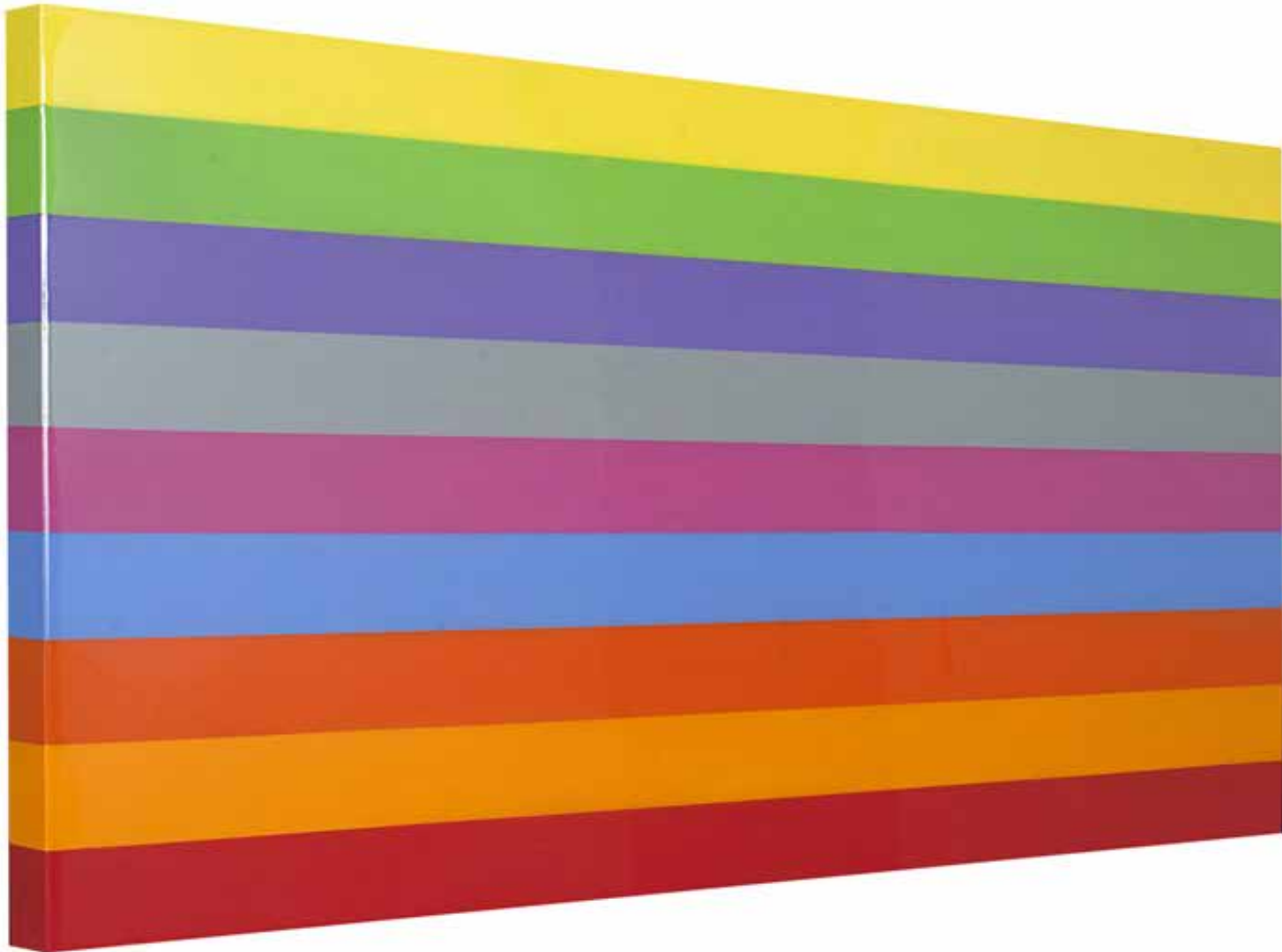


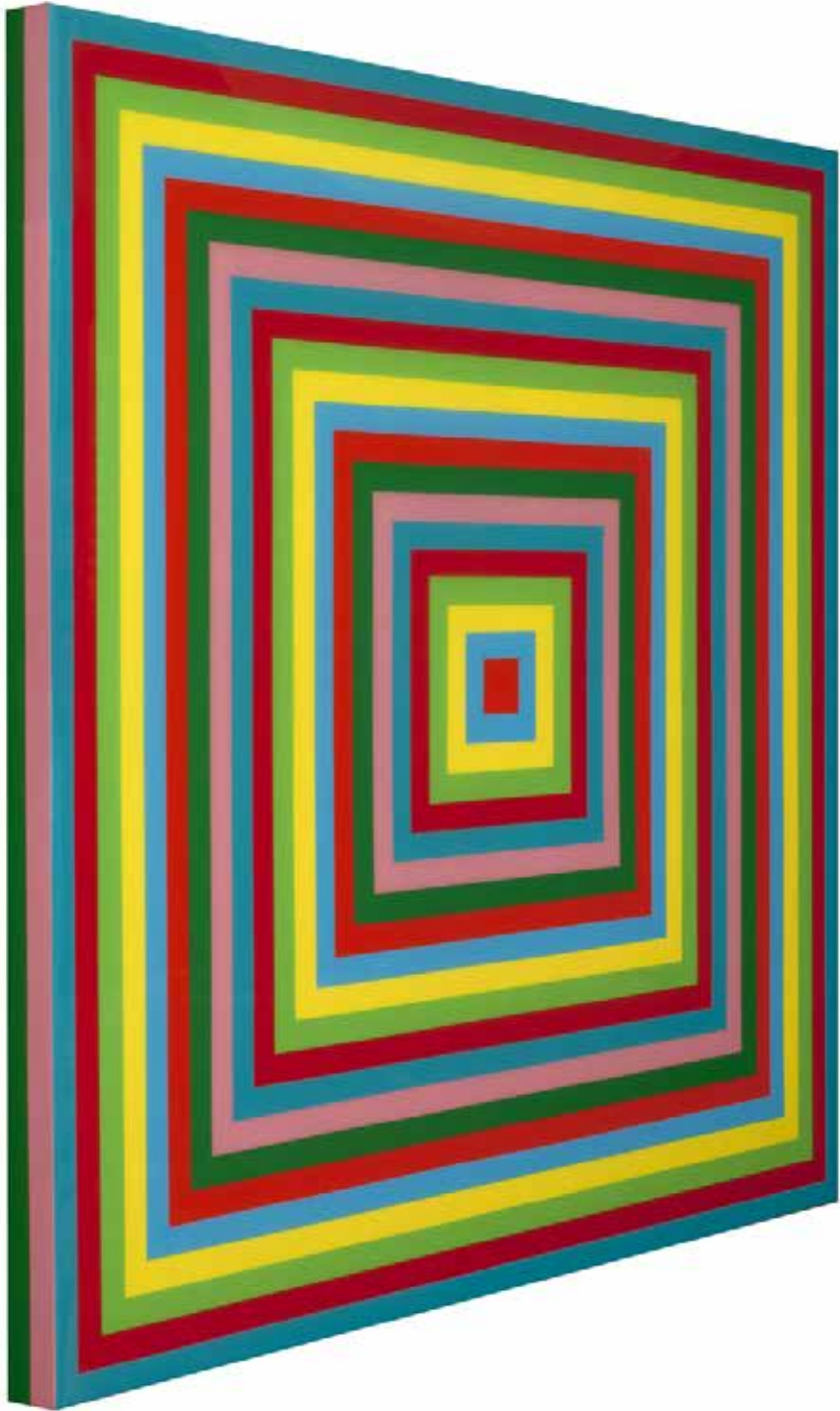
HEIDI SPECTOR

Please Don't Stop the Music, 2013

Liquitex with resin on birch panel
15 x 12 in.

HEIDI SPECTOR
Groove is in the Heart, 2012
Liquitex with resin on birch panel
27 x 55 in.





HEIDI SPECTOR
Disco Lemonade, 2013
Liquitex with resin on birch panel
44 x 44 in.



PATRICK PIETROPOLI

Untitled, 2014

Ink and oil on linen prepared with silver leaf
60 x 60 in. Triptych (each panel 60 x 20 in.)

The Cynthia Corbett Gallery was established in 2004 by Cynthia Corbett
– 2014 is the 10th Anniversary of The Cynthia Corbett Gallery.

THE CYNTHIA CORBETT GALLERY

T. +44 (0) 20 8947 6782

M. UK +44 (0) 7939 085 076

M. US +1 773 600 7719

info@thecynthiacorbettgallery.com

www.thecynthiacorbettgallery.com
