

THE CYNTHIA CORBETT GALLERY

A woman with dark hair and red lipstick is floating on her back in dark, rippling water. She is wearing a white, long-sleeved lace dress. The water is dark blue/black, and numerous bright, starburst-like lights are scattered throughout, creating a magical, ethereal atmosphere. The lights appear to be reflecting off the water or are small lights themselves. The overall mood is dreamlike and ethereal.

YOUNG MASTERS

THE CYNTHIA CORBETT GALLERY
presents

YOUNG MASTERS
at **RON ROBINSON**

19 February - 25 March 2016

*1327 5th Street
Santa Monica, CA*

The Cynthia Corbett Gallery
15 The Downs, London, SW20 8UA, UK

Tel. +44 (0) 20 8947 6782
M. UK +44 (0) 7939 085 076
M. US + 1 773 600 7719
info@thecynthiacorbettgallery.com
www.thecynthiacorbettgallery.com
www.young-masters.co.uk

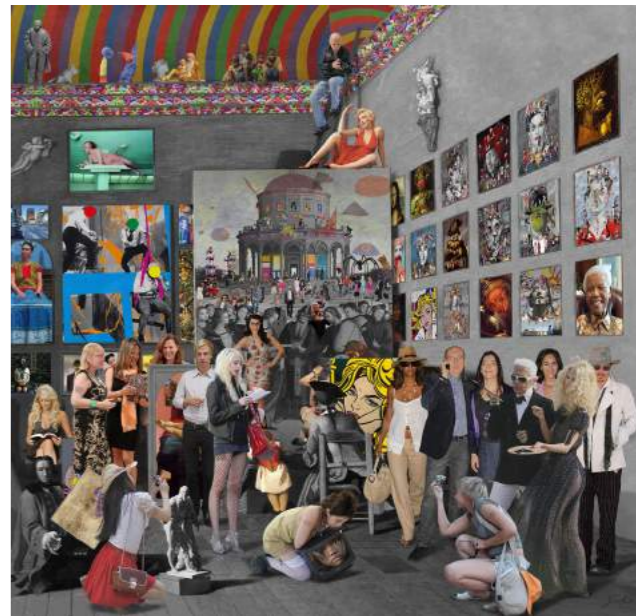
corbettPROJECTS →

Young Masters

LLUÍS BARBA

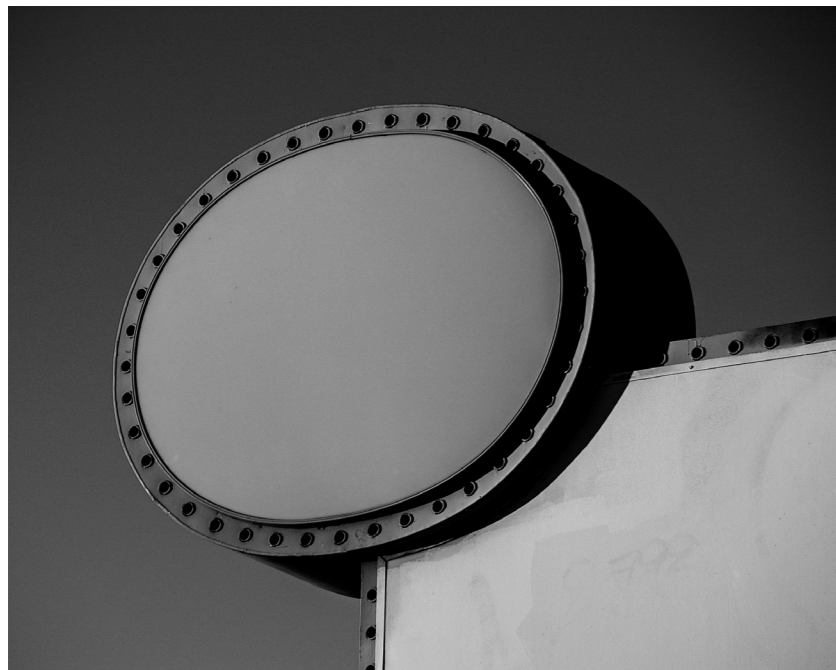


Lluís Barba
La Muestra de Gersaint Watteau, 2016
Edition of 6
C-print, perspex mounted on aluminium
39 x 65 in



Lluís Barba
The Studio of the Painter, Pierre Subleyras, 2012
Edition of 6
C-print, perspex mounted on aluminium
40.6 x 39.4 in

ANDY BURGESS



Andy Burgess
Empty Sign, 2015
Edition of 10
Sepia Toned Silver gelatin on fibre paper
8 x 10 in



Andy Burgess
Chevrolet, 2015
Edition of 10
Sepia Toned Silver gelatin on fibre paper
8 x 10 in

ELISABETH CAREN



Elisabeth Caren
Ophelia No.5, 2013
Edition of 6
C-print, perspex mounted on aluminium
40 x 60 in.

Left:
Elisabeth Caren
Madame Bovary No.1, 2015
Edition of 6
C-print, perspex mounted on aluminium
24 x 15.7 in



Right:
Elisabeth Caren
Cage Crinoline, 2013
Edition of 6
C-print, deckled and floating on in a
white wood frame
29 3/8 x 22 1/2 in



JON CARMICHAEL



Jon Carmichael
Anonymous, 2014
Edition of 18
C-type print/perspex mounted in
stainless frame with a black linen liner
30 x 60 in



Jon Carmichael
Neighbors, 2014 - 2015
Edition of 12
C-type print/perspex mounted
60 x 30 in

TOM LEIGHTON



Tom Leighton
Venice 2, 2010
Edition of 5
C-print, perspex mounted on aluminium
48.8 x 78.8 in



Tom Leighton
The Capitol, 2016
Edition of 5
C-print perspex mounted on aluminium
48 x 48 in

FABIANO PARISI



Fabiano Parisi
The Empires of Light Series, No. 03 - USA, 2014
Edition of 8
C-type photograph mounted on dibond in tray frame
29.5 x 43.3 in.

ISABELLE VAN ZEIJL



Isabelle Van Zeijl
She, 2014
Edition of 7
Perspex face mounted C-print on dibond in tray frame
43.3 x 39.4 in.

LOTTIE DAVIES



Lottie Davies
The Blue Bedroom, 2005
Edition of 10
Lambda print on aluminium in tray frame
22 x 39.4 in

CREDITS

THE CYNTHIA CORBETT GALLERY at RONROBINSON
19 February - 25 March 2016

Published by The Cynthia Corbett Gallery

All images courtesy the artists/The Cynthia Corbett Gallery

Design by Marina Maniadaki

No part of this publication may be reproduced in any format without the express permission of the publishers.

Printed in the UK

The Cynthia Corbett Gallery
15 The Downs, London, SW20 8UA, UK

Tel. +44 (0) 20 8947 6782
M. UK +44 (0) 7939 085 076
M. US + 1 773 600 7719
info@thecynthiacorbettgallery.com
www.thecynthiacorbettgallery.com
www.young-masters.co.uk

RONROBINSON

1327 5th Street
Santa Monica, CA
+1 310 458 1160
Store hours:
Monday - Saturday 10 am - 7 pm | Sunday 12 - 6 pm
www.ronrobinson.com

