

THE CYNTHIA CORBETT GALLERY

15 CLAREMONT LODGE, 15 THE DOWNS
WIMBLEDON LONDON SW20 8UA

ANNE-FRANÇOISE COULOUMY. *INTÉRIEURS, EXTÉRIEURS*

The Cynthia Corbett Gallery has the pleasure to announce the long-awaited London solo exhibition of French artist Anne-Françoise Couloumy.



Private View: Tuesday 26 June, 6-9 pm

Jazz Reception: Tuesday 5 July, 6-9 pm

Exhibition runs 25 June – 7 July 2012

An off Site exhibition presented by The Cynthia Corbett Gallery

Gallery 27, 27 Cork Street, Mayfair, London W1S 3NG

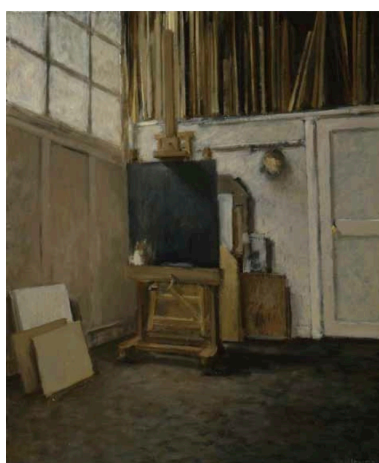
Nearest Tube: Green Park

Hours: Daily 11am – 7pm or by appointment

T. +44 (0) 20 7734 7595 M. UK +44 (0) 7939 085 076

The Cynthia Corbett Gallery is delighted to present the long-awaited London solo exhibition of French artist Anne-Françoise Couloumy. After completing her studies at the *Ecole Nationale Supérieure des Arts Décoratifs*, Couloumy began to exhibit in France, where she rapidly gained wide recognition. Following the huge success of her first exhibition in Paris, in 1994, she has enjoyed sell-out shows in Paris, London and New York. The waiting list for her paintings is testimony to her ability to capture the imagination of the cultural community in France and beyond. Her work is now held in collections throughout the world and, in January 2007, she was appointed the rank of Chevalier by *l'ordre des Arts et des Lettres*, Ministère de la Culture et de la Communication, République Française. Anne-Françoise Couloumy's paintings are reminiscent of Vermeer, Balthus and Hopper. There is a poignant intimacy to them that captures a serene silence, and her use of light and attention to detail are truly exemplary. Couloumy doesn't fit into any particular school of painting; her work is timeless, classical and contemporary, with an air of mystery that surrounds it – this elusiveness adds to the beauty of this enigmatic painter.

The French writer Eric-Emmanuel Schmidt believes Anne-Françoise's works are more than paintings; it is not *"paint brushes, but a soul, who occupies the canvas in an imperious, compact and vigorous manner."*



Anne-Françoise Couloumy gained her notoriety by representing Interiors and developing a recognizable brushstroke through the years. For this new solo exhibition, Anne-Françoise again proves her professionalism and talent by introducing new topics to her painting themes. The **Ciel** series inserts a varied blue palette and depicts the sky under the influence of its different moods; the way Anne-Françoise uses the light in these paintings and in her **Paysage** series is very representative of her style, but this time in an outdoor environment. The characters of her **Nocturne** series are represented in a small scale with sober costumes that prevent any conclusions about the period or the place they occur in. The subject of her **Beds** tends to embody a very reassuring and personal place that accommodates our sleep, where the creased bed linen seems to tell a story or a moment. In these two series Anne-Françoise invites the visitors to take the time to look at them and to develop their fertile imagination to complete the stories represented in her paintings.